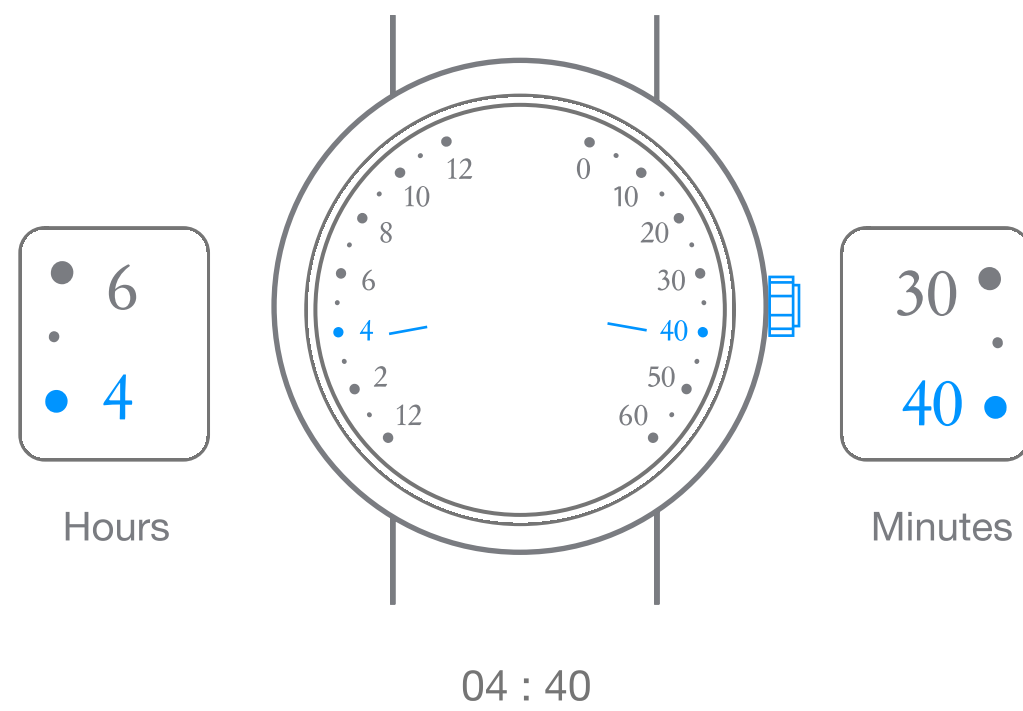


# Van Cleef & Arpels

## Manual-winding double retrograde mechanical movement

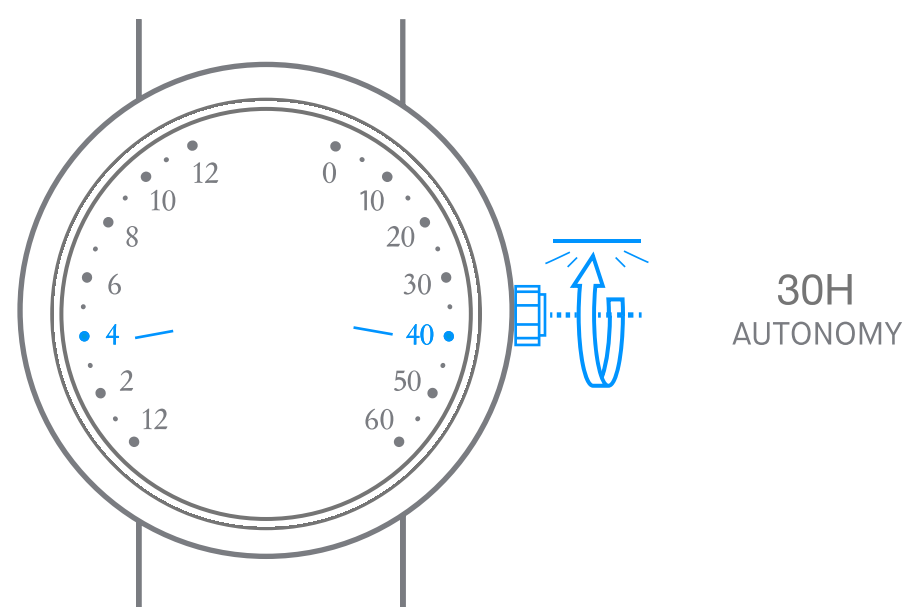
### 1. Read the time

---



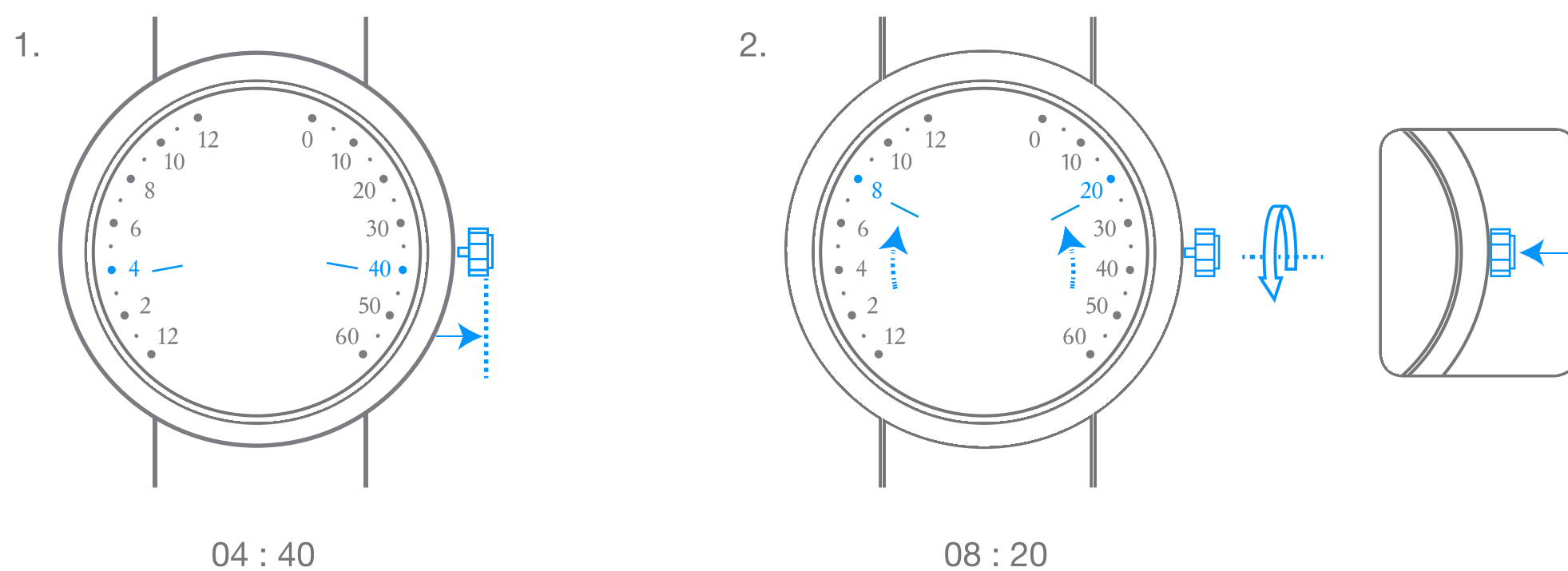
### 2. Wind the watch

---



### 3. Set the time

---



# Van Cleef & Arpels

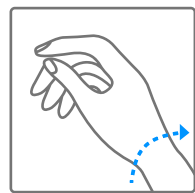
## Pictograms

00h  
AUTONOMY

Your watch's power reserve



Important note: wait 30 seconds after winding the watch before setting the time



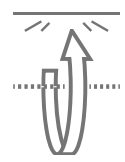
Self-winding through your wrist movement



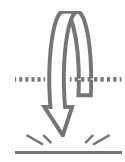
Turning clockwise



Turning counter-clockwise



Turning clockwise until you meet resistance



Turning counter-clockwise until you meet resistance



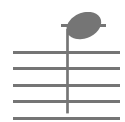
LOCAL TIME

Local time



2<sup>nd</sup> TIME ZONE

Time in selected country



High-pitched sound



Low-pitched sound