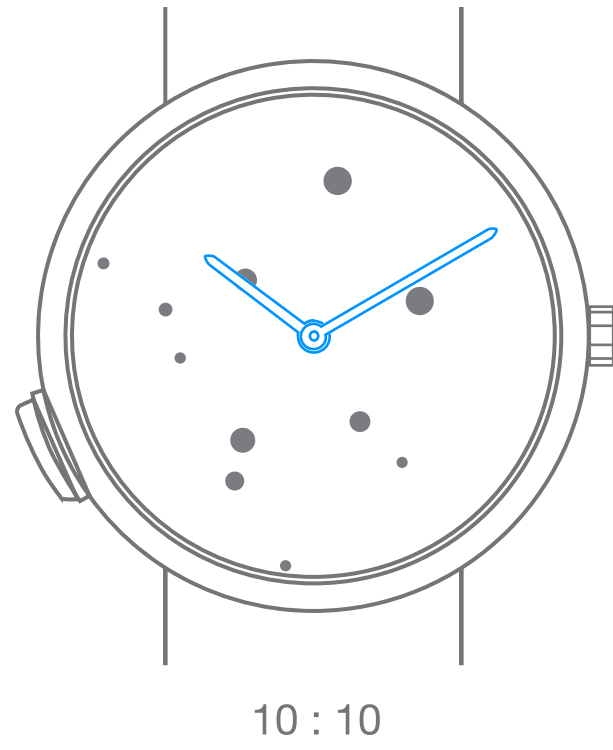


# Van Cleef & Arpels

## Self-winding light on demand mechanical movement

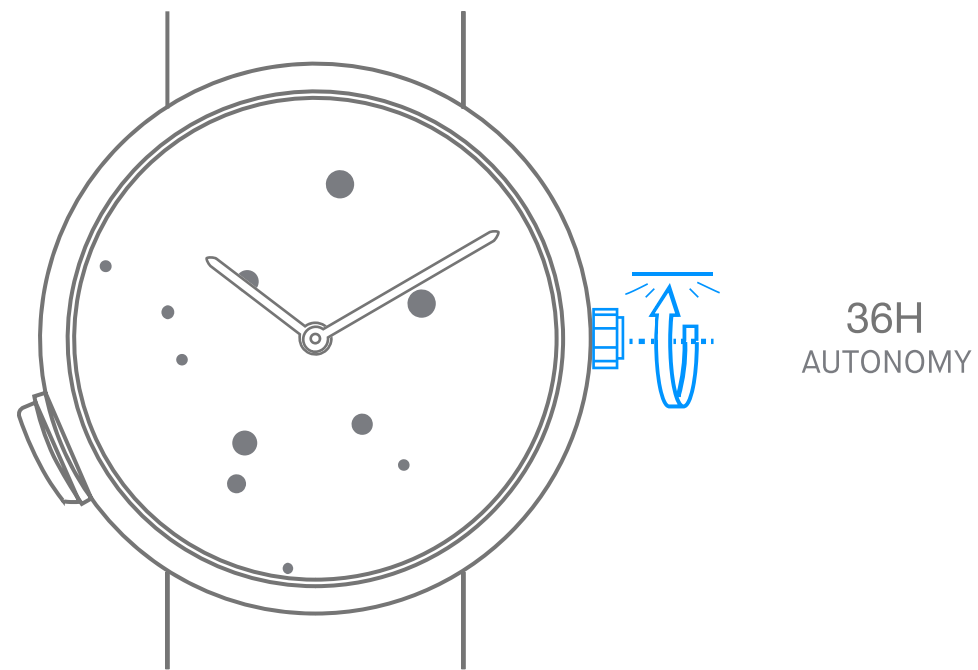
I. Read the time

---



2.Wind the watch

---

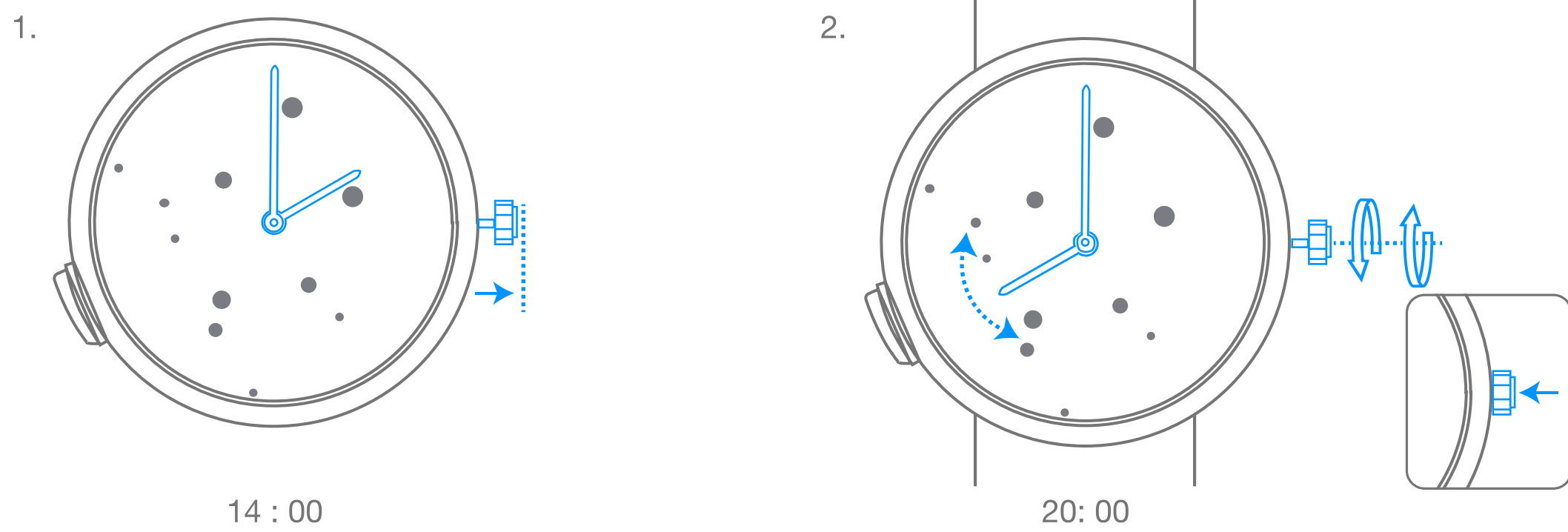


# Van Cleef & Arpels

## Self-winding light on demand mechanical movement

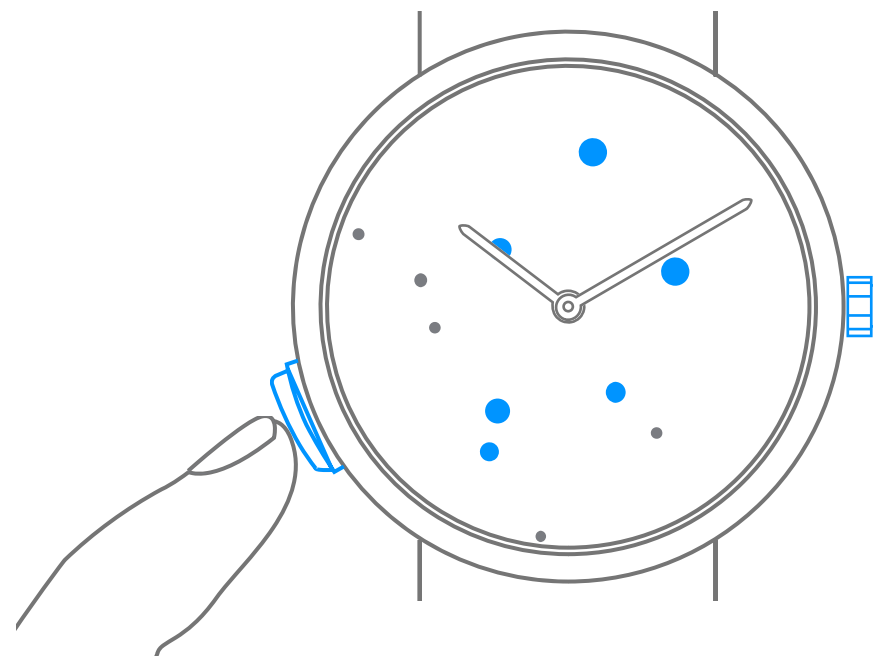
### 3. Set the time

---



### 4. Launch the lightning animation

---



# Van Cleef & Arpels

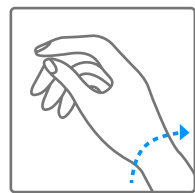
## Pictograms

00h  
AUTONOMY

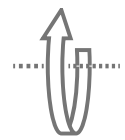
Your watch's power reserve



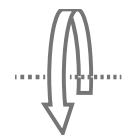
Important note: wait 30 seconds after winding the watch before setting the time



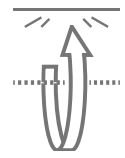
Self-winding through your wrist movement



Turning clockwise



Turning counter-clockwise



Turning clockwise until you meet resistance



Turning counter-clockwise until you meet resistance



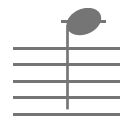
LOCAL TIME

Local time

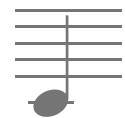


2<sup>nd</sup> TIME ZONE

Time in selected country



High-pitched sound



Low-pitched sound