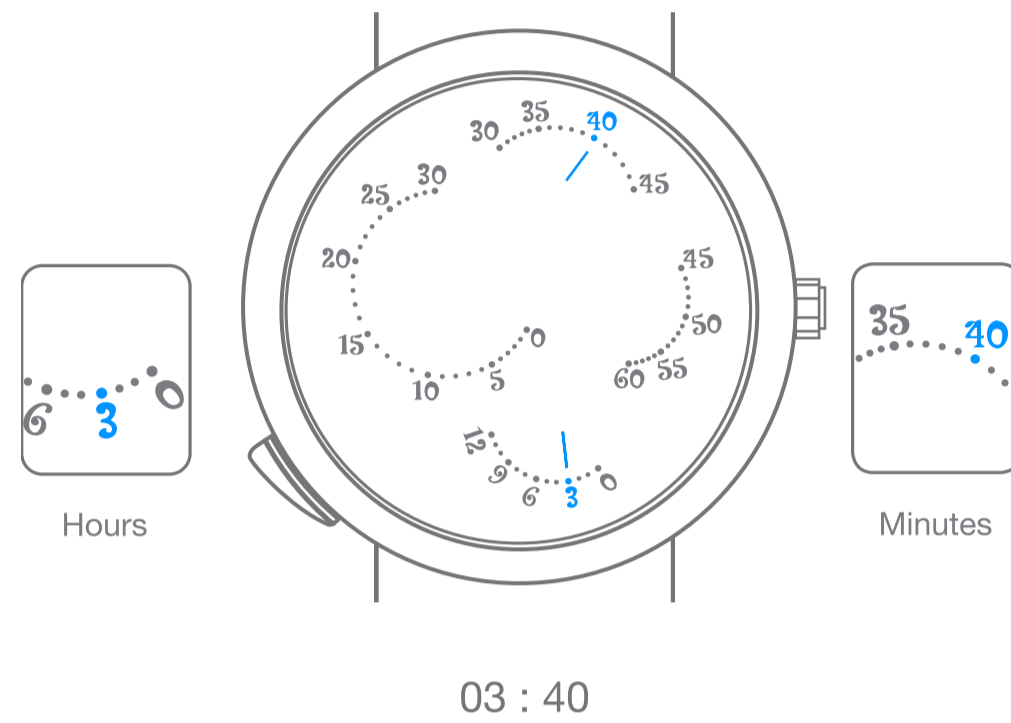


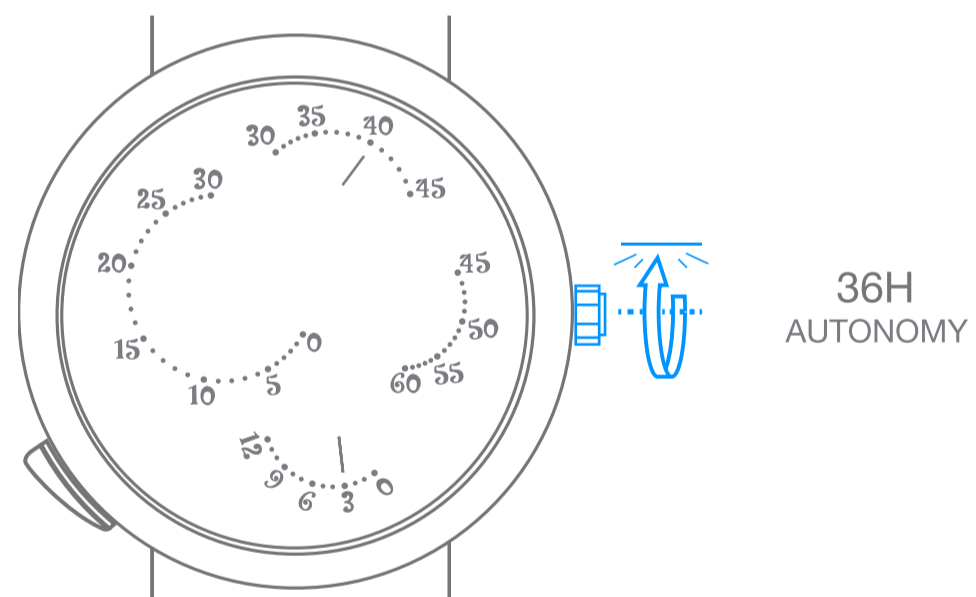
Van Cleef & Arpels

Self-winding retrograde jumping hours, variable speed minutes, animation on demand mechanical movement

I. Read the time



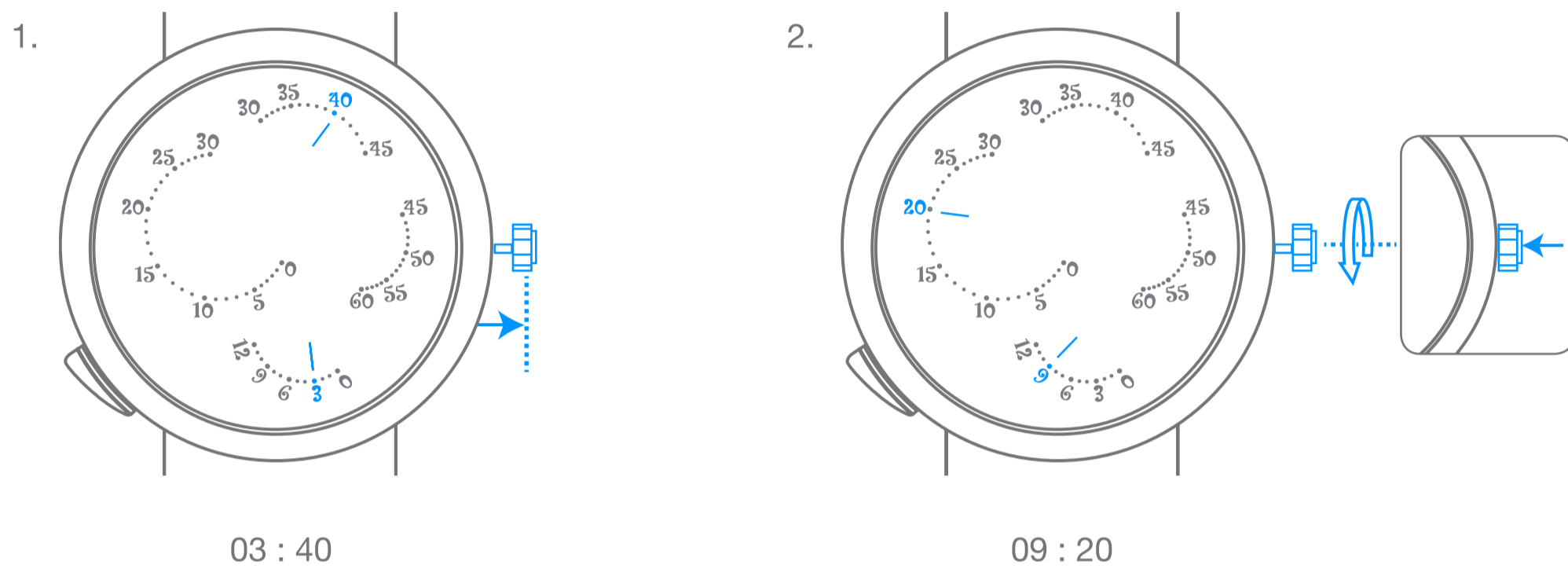
2. Wind the watch



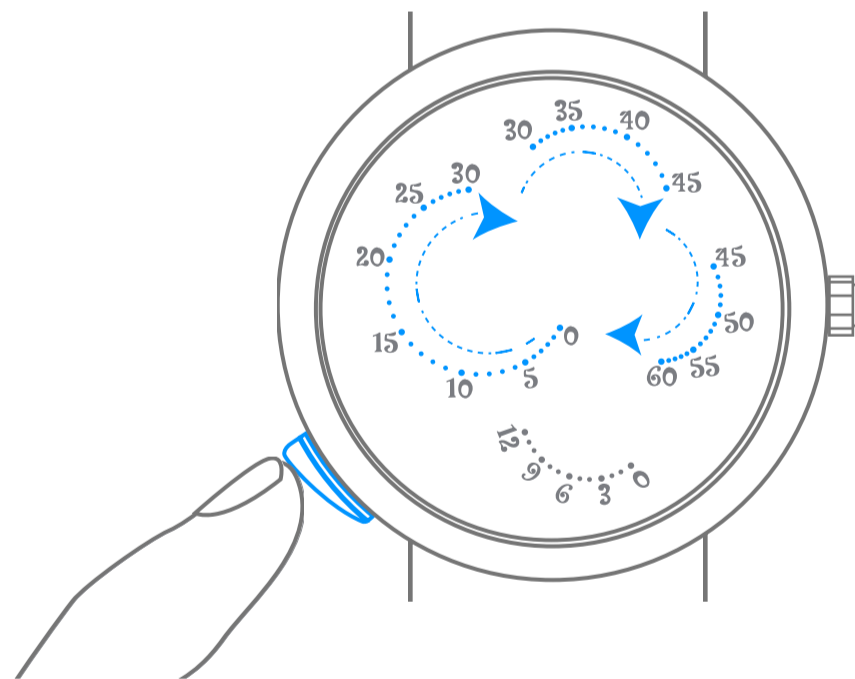
Van Cleef & Arpels

Self-winding retrograde jumping hours, variable speed minutes, animation on demand mechanical movement

3. Set the time



4. Launch the Butterfly animation



Van Cleef & Arpels

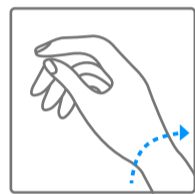
Pictograms

00h
AUTONOMY

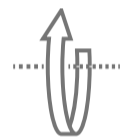
Your watch's power reserve



Important note: wait 30 seconds after winding the watch before setting the time



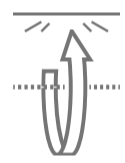
Self-winding through your wrist movement



Turning clockwise



Turning counter-clockwise



Turning clockwise until you meet resistance



Turning counter-clockwise until you meet resistance



LOCAL TIME

Local time



2nd TIME ZONE

Time in selected country



High-pitched sound



Low-pitched sound